



PROJECT SNAPSHOT

Project Name:	<i>Pip's Island</i>
Location:	New York, NY
Installation Completion:	April 2019
Lighting Design:	Arc3design
Production Electrician:	Jarrod Jahoda
Set Electrics:	Dante Olivia Smith
Production Management:	Tinc Productions
Lighting Package:	4Wall Entertainment
City Theatrical Solution(s):	QolorFLEX® LED Tape (RGB, RGBA, RGBCW, and RGBI), QolorFLEX NuNeon™ RGB, QolorFLEX 5x8A Dimmers, QolorFLEX 24x3A Dimmers, SHoW DMX SHoW Baby® 6 Wireless DMX, Lightwright® 6

PIP'S ISLAND

Pip's Island is a one of a kind interactive theatrical adventure where kids are the stars of an hour-

long inspirational "hero's journey". Children ages four and up and their families engage in a multi-sensorial universe in which they can express their imagination and craft a unique, magical experience.

CHALLENGES

After three years of workshop and exploratory productions, the creative team for *Pip's Island* developed a children's theatre experience for the flagship production that is not only immersive, but tactile. The show was designed such that children could interact with every surface, every sound, even every smell, as a complete 360-degree sensory experience. To achieve this, all lighting design needed to be built directly into the set, props, and décor, rather than primarily hanging above.

This fully integrated approach to lighting required new ways of using lighting technology like LED tape. LED tape was required to create cued color-changing effects, large scale windows and port holes, and even become the driving light in a room to replace traditional lighting fixtures. The designers sought a versatile, durable LED tape that could accomplish all of these design elements and last for years to come.

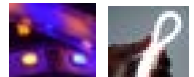
SOLUTION

The lighting design team specified four types of QolorFLEX RGB LED Tape and QolorFLEX NuNeon with dimming control by QolorFLEX Dimmers to maximize the lighting effects they were able to achieve using LED tape over time and daily use for this permanent installation.

"For this show, we needed LED tape that could react like a high end theatrical fixture, dimmers that would dim at low levels, and quality that would last. That is why we specified QolorFLEX."

- Al Crawford, Founder/CEO and Lighting Designer for Arc3design

Learn more about QolorFLEX LED tape products at:
www.citytheatrical.com/products/led-tape-qolorflex
www.citytheatrical.com/products/qolorflex-nuneon





SOLUTION *(Continued)*

The room called “Shelley’s” was designed to be an underwater boudoir where children can interact with coral, shells, and wildlife in an aquatic setting. To bring this room to life, the lighting design team used several pixels of QolorFLEX RGBI (RGB + Indigo) LED Tape to create tiny lighting fixtures behind each of the 50+ hand-sized shells spread over the coralscape. The effect was an interactive underwater ambiance with full color control using QolorFLEX Dimmers.

Nearly all characters in the show interact with electricity or light in a magical manner. To achieve the look of electricity coming out of the hands of one of the characters and being sent across a room, the lighting design team used SHoW DMX SHoW Baby 6 transceivers to control FUEL SuperSpots through wireless DMX.

“I’ve worked on a lot of projects with many kinds of products. For this show, failure in the long run was not an option. I knew City Theatrical products would stand the test of time.”

- Al Crawford, Founder/CEO and Lighting Designer for Arc3design



Learn more about QolorFLEX 5x8A Dimmers at:
www.citytheatrical.com/products/qolorflex-5x8A-dimmer



Learn more about QolorFLEX 24x3A Dimmers at:
www.citytheatrical.com/products/qolorflex-24x3A-dimmer



Learn more about SHoW DMX SHoW Baby 6 at:
www.citytheatrical.com/products/show-dmx-show-baby-6-wireless-dmx